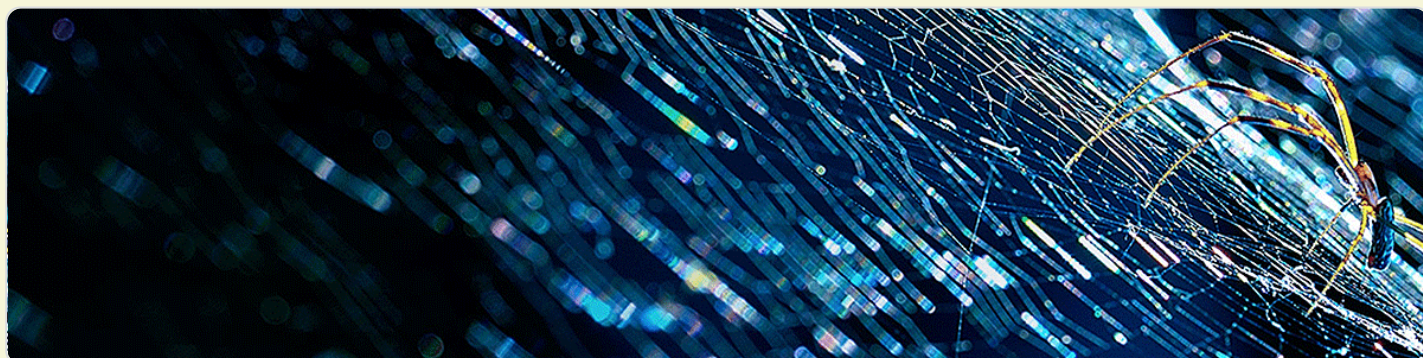




Send



Questions Responses Settings



# The Democratic Party of Hawai'i - Affirmative Action Survey

The Democratic Party of Hawai'i (DPH) embraces its historic commitment to the principles of full participation, equal opportunity, representation, and rights for the diverse peoples of Hawai'i. The Democratic Party reaffirms its commitment to the goal of full representation and participation of the people of Hawai'i. We are an open Party that seeks representation and participation from individuals reflecting the diversity of Hawai'i society. These include but are not limited to individuals who differ concerning race, ancestry, national or ethnic origin, religion, age, disability, gender, gender identity, gender-expression, sexual orientation, and socio-economic status.

This survey will be used to inform the DPH of the demographics of its current active membership and to identify barriers to full representation and participation by all the diverse peoples of Hawai'i in the programs and activities of the Party.

To assist in this process, you are invited to complete this questionnaire which will be greatly appreciated. If you elect to provide the data, it will be kept confidential, and used only in accordance with DPH's Affirmative Action Policy.

## 1. First Name

Short answer text

**2. Last Name**Short answer text  
.....**2. Email**Short answer text  
.....**3. Phone number**Short answer text  
.....**4. Address**Short answer text  
.....**6. Race/Ethnicity -Please check all that apply \***

- White (Not Hispanic or Latino)
- Native Hawaiian (Not Hispanic or Latino)
- American Indian or Alaska Native (Not Hispanic or Latino)
- Black or African American (Not Hispanic or Latino)
- Chinese
- Filipino

- Japanese
- Korean
- Laotian
- Thai
- Vietnamese
- Latinx
- Polynesian
- Micronesian
- Tongan
- Samoan
- Tahitian
- Two or More Races (Not Hawaiian, Hispanic &/or Latino)
- Other...

### 7. Gender \*

- Female
- Male
- Non-binary
- Transgender Female
- Transgender Male
- Gender Variant/Non-Conforming
- Not Listed

### Sexual Orientation

- Asexual
- Bisexual
- Heterosexual
- Homosexual
- Pansexual
- Queer
- Not listed
- Do not wish to answer

**8. Age \***

- 16 - 25 (Gen Z)
- 25 - 36 (Millennial/YD)
- 37 - 41 (Millennial)
- 42 - 57 (Gen X)
- 58 - 67 (Boomer 2)
- 68 - 76 (Boomer 1)
- 77 - 84 (Post-war)
- 85 - 94 (Post-war)
- 95+ (Greatest Generation)

9. VETERAN SELF-IDENTIFICATION: A "disabled veteran" is one of the following: a veteran of the U.S. military, ground, naval or air service who is entitled to compensation (or who but for the receipt of military retired pay would be entitled to compensation) under laws administered by the Secretary of Veterans Affairs; or a person who was discharged or released from active duty because of a service connected disability. A "recently separated veteran" means any veteran during the three-year period beginning on the date of such veteran's discharge or release from active duty in the U.S. military, ground, naval, or air service. An "active duty wartime or campaign badge veteran" means a veteran who served on active duty in the U.S. military, ground, naval or air service during a war, or in a campaign or expedition for which a campaign badge has been authorized under the laws administered by the Department of Defense. An "Armed forces service medal veteran" means a veteran who, while serving on active duty in the U.S. military, ground, naval or air service, participated in a United States military operation for which an Armed Forces service medal was awarded pursuant to Executive Order 12985. \*

- I identify as one or more of the classifications of protected veteran listed above
- I am not a protected veteran
- I don't wish to answer

10. Voluntary Self-Identification of Disability: HOW DO I KNOW IF I HAVE A DISABILITY? You are considered to have a disability if you have a physical or mental impairment or medical condition that substantially limits a major life activity, or if you have a history or record of such an impairment or medical condition. Disabilities include, but are not limited to: Blindness, Deafness, Cancer, Diabetes, Autism, Cerebral palsy, HIV/AIDS, Schizophrenia, Bipolar Disorder, Major depression, Multiple sclerosis (MS), Missing limbs or partially missing limbs, Obsessive compulsive disorder, Post-traumatic stress disorder (PTSD), Impairments requiring the use of a wheelchair, Intellectual disability (previously called mental retardation), Epilepsy, Muscular dystrophy. \*

- Yes, I have a disability (or previously had a disability)
- No, I don't have a disability
- I DON'T WISH TO ANSWER

How long have you been a registered Democrat?

- New - 5 years
- 5 - 10 years
- over 10 years

In your opinion, what barriers do you believe prevent people from participating in Democratic Party of Hawai'i activities??

Long answer text

---

Education

- Some High School
- High School Diploma
- GED/High School Equivalency
- Some College, No Degree
- Trades School Graduate
- AA Degree
- Bachelors Degree
- Masters
- Doctorate
- Post-Doctorate

### Annual Household Income

- Less than 20,000
- 20,000-39,999
- 40,000-59,999
- 60,000-79,999
- 80,000-99,999
- 100,000-124,999
- 125,000-149,999
- 150,000-199,999
- 200,000 or more